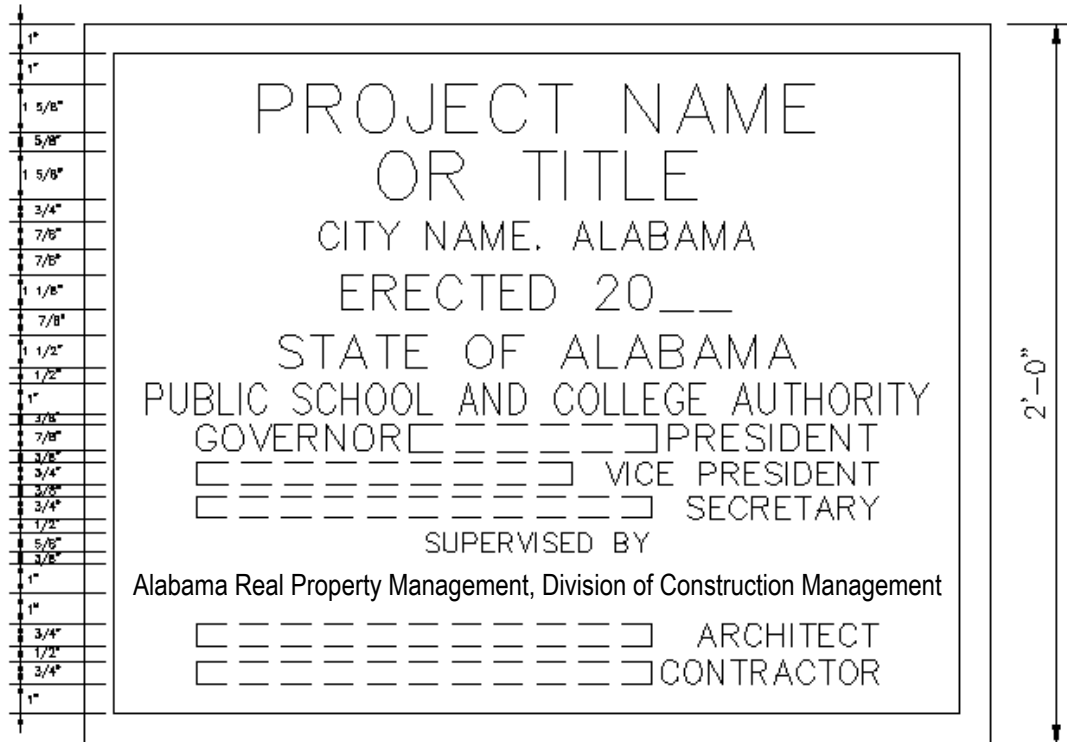


### Detail of PSCA Plaque



**Notes:**

1. PSCA plaques are installed as a permanent part of a building and are required on the following partially or fully PSCA-funded projects: Major renovations, renovations of four (4) or more rooms, and all new construction as follows: buildings, additions, and athletic facilities. DCM Form 9-M must be included in the project manual of such projects. Exception: Alabama Community College System (ACCS) PSCA-funded projects with Notice-To-Proceeds issued after July 31, 2021 are not submitted to DCM.
2. PSCA plaques are not required on the following partially or fully PSCA-funded projects: Sitework, paving, parking lots, utility work, re-roofing, and finishes (such as painting). DCM Form 9-M should not be included in the project manual of such projects.
3. The erection year is the year the project is completed.
4. Guidance for determining the names of PSCA officials:  
 The PSCA President is the current Governor of Alabama.  
 The PSCA Vice President is the current State Superintendent of Education.  
 The PSCA Secretary is the current Director of the Alabama Department of Finance.